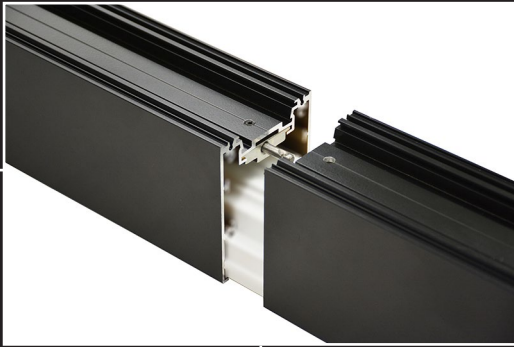


## INTEGRATE LIGHT WITH LIFE, BEAUTIFULLY

The mConnect™ is our method of joining profiles together seamlessly. Now available across all popular profiles in our product range to ensure your next mLight lighting installation is hassle-free.



Step 1  
Locate

### Key features...

- Easy installation process
- Locates and connects pieces accurately
- Seamless joins means minimal light leakage



Step 2  
Tighten

### How to use...

- LOCATE both extrusion pieces with mConnect joins (extrusion pieces will be labelled with numbers to match up)
- TIGHTEN associated grub screws with an allen key until sections are pressed firmly together (complete for all sections that require joining)
- EXAMINE the fitting to ensure there is consistent alignment between joins (re-tighten grub screws at locations where joins are not aligned)



Step 2  
Examine